

Table of Contents

- [Meet the Sales Agent](#)
- [Photo Gallery](#)
- [Property Details](#)
- [Google Map - Property Location](#)
- [Features at a glance](#)
- [Helpful Information](#)
- [Disclaimer](#)



**first
national**
REAL ESTATE

Bundaberg

255 Avondale Road Avondale



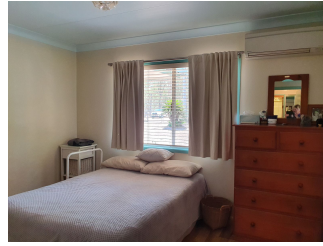
first
national
REAL ESTATE

Bundaberg

255 Avondale Road Avondale

Photo Gallery







first
national
REAL ESTATE

Bundaberg

255 Avondale Road Avondale

Property Details

6



2



6



24.89 hectares



255 Avondale Road, AVONDALE QLD



Currently growing egg plants or you can grow whatever you would like.

There are 6 titles ♦ 24.4782 hectares, 3.026 hectares, 1117m² block, 2 x 1500m² blocks and .002 lease block where pump is at the riverbank.

Water infrastructure - 2 dams 40mg/l irrigation dam and 40mg/l tailing dam taking the greenhouse waste water.

2 x 20mg/l Medium priority Avondale water allocation plus 76 un-supplemented water harvesting licence.

* 15m x 12m Packing shed

* 21m x 7m Maintenance/storage shed

* Staff Amenities shed 9m x 6m

* 20 pallet cool room ♦ needs new compressor

* 9m x 6m Irrigator/Fertiliser/Chemical/Controller shed

* Greenhouse 1 - 44m x 32m poly

* Greenhouse 2 - 48m x 38.4m poly

* Greenhouse 3 - 48m x 31.5m pol

* Greenhouse 4 - 90m x 32m poly

* Greenhouse 5 - 97.2m x 64m poly

House 1 - 3 bedroom home, air conditioner. 3 bedrooms, kitchen, dining room, lounge, single bathroom/toilet, lockup garage that is used as office, large entertainment area and 4 car accommodation.

House 2 - 3 bedroom home, air conditioner, 3 bedrooms, kitchen, dining room, lounge, single bathroom/toilet, double lockup garage, large exterior entertainment area, Solar power.

This property has been a great family run business for many years but now it is time to retire. Being sold on a walk in walk out basis, complete details and a full list of machinery is available on request.

255 Avondale Road, AVONDALE QLD

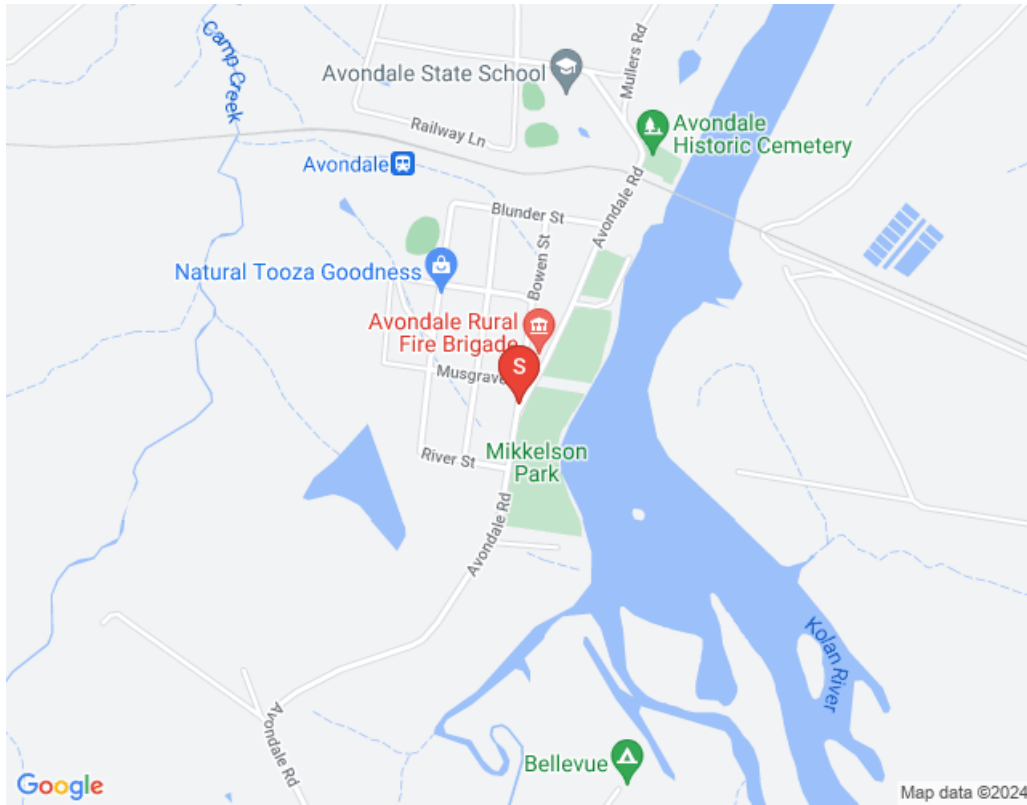


**first
national**
REAL ESTATE

Bundaberg

255 Avondale Road Avondale

Google Map - Property Location Map





**first
national**
REAL ESTATE

Bundaberg

255 Avondale Road Avondale

Features at a glance

- *6 Bedrooms*
- *2 Bathrooms*
- *6 Garages*



**first
national**
REAL ESTATE

Bundaberg

255 Avondale Road Avondale

Helpful Information

[Bundaberg Waste Collection Map](#)

[Bundaberg School Catchment Interactive Map](#)

[Topographical Infrastructure Overview](#)

Disclaimer

The information included in this eBook has been furnished to us by the Vendor of the property. We have not verified whether or not that information is accurate and have no belief one way or another in its accuracy. We do not accept any responsibility to any person for its accuracy and do no more than pass it on. All interested parties should make and rely upon their own enquiries in order to determine whether or not this information is in fact accurate.